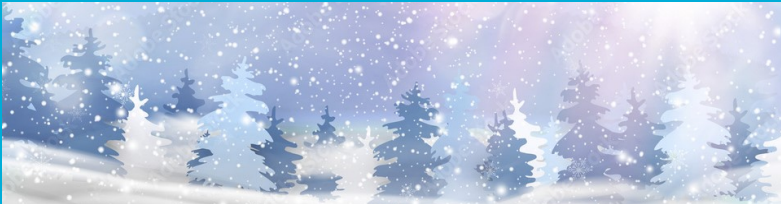
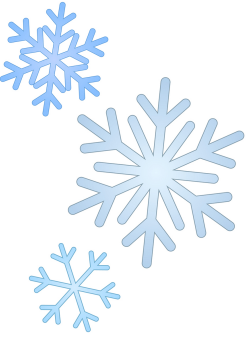




January 2024

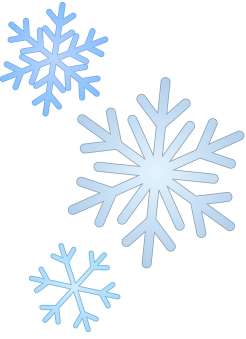


Sunday	Monday	Tuesday	Wednesday	Thursday	Friday	Saturday
	<u>New Year's Day</u> <u>Happy 2024!</u> 11:00 Rose Bowl Parade on TV 2:15 The Year 2023 in Review 1	10:15 BINGO 2 1:30 Physio Group Exercises (Willow) 2:15 Travelogue	10:30 Java Memory 3 11:00 Physio Group Exercises (Cherry) 2:15 Manicures	10:30 Poet Tree 4 2:15 Coffee & Current Events 2:30 Hope Group	10:15 Trivia 5 1:30 Physio Group Exercises (Willow) 2:15 Bean Bag Toss	10:30 Java Mentors 6 11:00 Physio Group Exercises (Willow) 2:15 Music Request Hour: Say It & We Play It
10:45 Virtual Church Service 7 2:15 What's Cooking?	11:00 Physio Group Exercises (Cherry) 8 2:15 Table Top Tidbits 2:45 Memory Lane	10:15 Wrapping up the Holidays 9 1:30 Physio Group Exercises (Willow) 2:15 Movie Matinee	10:15 Manicures 10 10:30 Java Memory 11:00 Physio Group Exercises (Cherry) 2:15 Music with Tara Dunphy	10:15 BINGO 11 2:15 Axe Throw 7:00 Celebration of Life Service	10:15 Trivia 12 1:30 Physio Group Exercises (Willow) 2:15 Men's Club	10:30 Java Music 13 11:00 Physio Group Exercises (Willow) 2:15 Whole Home Bingo
10:30 Chapel Service with Chris 14 10:45 Virtual Church Service 2:15 What's Cooking?	<u>Martin Luther King Jr. Day</u> 15 11:00 Physio Group Exercises (Cherry) 2:15 Magnetic Darts 6:00 Movie Night: Dumbo (1941)	10:15 BINGO 16 1:30 Physio Group Exercises (Willow) 2:15 Bean Bag Toss	10:30 Java Memory 17 10:30 Manicures 11:00 Physio Group Exercises (Cherry) 2:15 Crafts & Colouring	10:15 Catholic Mass 18 2:30 Inspire 2:30 Dice Game: Left, Right, Centre	<u>Fry-Day</u> 19 10:15 Trivia 1:30 Physio Group Exercises (Willow) 2:15 Fry-Day Social	10:30 Java Music 20 11:00 Physio Group Exercises (Willow) 2:15 Indoor Bowling
10:45 Virtual Church Service 21 2:15 What's Cooking?	11:00 Physio Group Exercises (Cherry) 22 2:15 Colour Your World	10:15 BINGO 23 1:30 Physio Group Exercises (Willow) 2:15 Axe Throw	<u>Celebrating Elvis</u> 24 10:30 Java Memory 11:00 Physio Group Exercises (Cherry) 2:15 Elvis Entertainment	10:15 Trivia 25 10:30 Drum Circle 2:15 Manicures	8:30 Breakfast Club 26 1:30 Physio Group Exercises (Willow) 2:15 Knitting & Crocheting Club	10:15 What's Cooking? Soup 27 10:30 Hymn Sing 11:00 Physio Group Exercises (Willow) 2:15 Soups On! Tasting
10:30 Chapel Service with Chris 28 10:45 Virtual Church Service 2:15 Java Music	10:15 Magnetic Darts 29 11:00 Physio Group Exercises (Cherry) 2:15 Cherry Birthday Party	9:45 Food Advisory & Residents' Council Meeting 30 1:30 Physio Group Exercises (Willow) 2:15 BINGO	<u>Visiting Library Delivery</u> 31 10:30 Java Memory 10:30 Manicures 11:00 Physio Group Exercises (Cherry) 2:15 Music with Gary McGill	<i>All programs are subject to change</i>		<h2>CHERRY Suites</h2> <p><i>Activity Aide ~ Amir</i> <i>sblprograms@southbridgecare.com</i></p>



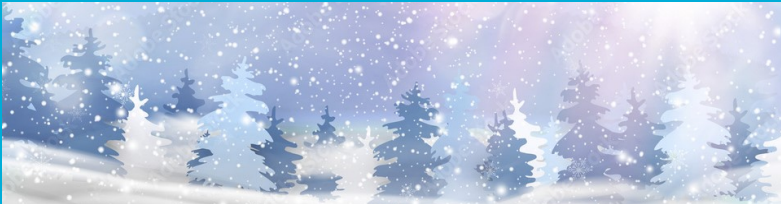
January 2024

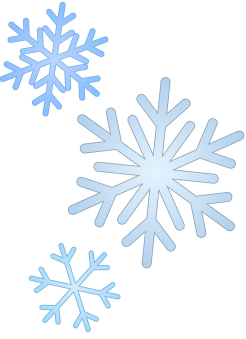


Sunday	Monday	Tuesday	Wednesday	Thursday	Friday	Saturday
	<u>New Year's Day</u> <u>Happy 2024!</u> 10:15 New Year's Resolutions Over The Years 11:00 Rose Bowl Parade on TV 2:15 The Year 2023 in Review	10:15 Manicures 11:00 Physio Group Exercises (Oak) 2:15 New Beginnings Group	10:30 Java Memory 2:15 Board Games	10:30 Poet Tree 11:00 Physio Group Exercises (Maple)	10:15 BINGO 2:00 Movie Stars We Said Goodbye To In 2023	10:30 Java Mentors 1:30 Physio Group Exercises (Maple) 2:15 Music Request Hour: Say It & We Play It
10:45 Virtual Church Service 2:15 What's Cooking?	10:15 Daily Horoscopes 10:30 Jokes 1:30 Physio Group Exercises (Oak) 2:15 Card Games	10:15 Wrapping Up The Holidays 10:30 Hope Group 11:00 Physio Group Exercises (Oak) 2:00 The Golden Girls Show	10:30 Java Memory 2:15 Music with Tara Dunphy	10:15 Finish the Phrase: Old Puns 11:00 Physio Group Exercises (Maple) 2:15 Memory Lane 7:00 Celebration of Life Service	10:15 BINGO 2:15 Men's Club 2:15 Meditation and Yoga	10:30 Java Music 1:30 Physio Group Exercises (Maple) 2:15 Whole Home Bingo
10:30 Chapel Service with Chris 10:45 Virtual Church Service 2:15 What's Cooking?	<u>Martin Luther King Jr. Day</u> 1:30 Physio Group Exercises (Oak) 2:00 Maples Monthly Birthday Party 6:00 Movie Night: Dumbo (1941)	10:15 Manicures 11:00 Physio Group Exercises (Oak) 2:15 Jewellery Making	10:30 Java Memory 10:30 Winter Craft 2:00 Movie with Treats	10:15 Catholic Mass 11:00 Physio Group Exercises (Maple) 2:15 Adult Colouring	<u>Fry-Day</u> 10:15 BINGO 12:00 Noon Hour Trivia 2:15 Fry-Day Social	10:30 Java Music 1:30 Physio Group Exercises (Maple) 2:15 Indoor Bowling
10:45 Virtual Church Service 2:15 What's Cooking?	10:30 Coffee and Current Events 1:30 Physio Group Exercises (Oak) 2:15 Room Visits: A Visit Down Memory Lane	10:15 Manicures 10:30 Inspire 11:00 Physio Group Exercises (Oak) 2:15 Board Games	<u>Celebrating Elvis</u> 10:30 Java Memory 2:15 Elvis Entertainment	10:15 Traveling and Facts about Canada 10:30 Drum Circle 11:00 Physio Group Exercises (Maple) 2:15 Music & Movement	8:30 Breakfast Club 10:15 BINGO 2:15 Knitting & Crocheting Club	10:15 What's Cooking? Soup 1:30 Physio Group Exercises (Maple) 2:15 Soups On! Tasting
10:30 Chapel Service with Chris 10:45 Virtual Church Service 2:15 Java Music	10:00 Wal-Mart Shopping & Lunch Outing 1:30 Physio Group Exercises (Oak) 2:15 Craft: Wooden Name Tags	9:45 Food Advisory & Residents' Council Meeting 10:15 Manicures 11:00 Physio Group Exercises (Oak) 2:15 Indigenous History In Canada	<u>Visiting Library Delivery</u> 10:30 Java Memory 2:15 Music with Gary McGill	<i>All programs are subject to change</i>		<h2>MAPLE Suites</h2> <p><i>Activity Aide ~ Penny</i> <i>sblprograms@southbridgecare.com</i></p>



January 2024

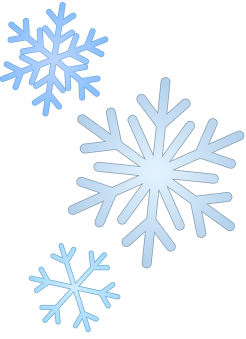


Sunday	Monday	Tuesday	Wednesday	Thursday	Friday	Saturday
	<u>New Year's Day</u> <u>Happy 2024!</u> 10:15 Manicures 11:00 Rose Bowl Parade on TV 2:15 The Year 2023 in Review 6:00 Dance Party	10:15 Sensory Visits 11:00 Physio Group Exercises (Oak) 2:15 Matching Game	10:15 Montessori 10:30 Java Memory 2:15 Colour Your World 6:00 Guitar Sing-a-long	10:15 BINGO 10:30 Poet Tree 11:00 Physio Group Exercises (Maple) 2:15 Helping Hands 6:00 Musical Ball Toss	12:00 Noon Hour Trivia 2:15 Hot Apple Cider and Visits 6:00 Karaoke Sing-a-long	10:30 Java Mentors 1:30 Physio Group Exercises (Maple) 2:15 Music Request Hour: Say It & We Play It
10:45 Virtual Church Service 2:15 What's Cooking?	10:15 Manicures 1:30 Physio Group Exercises (Oak) 2:15 Higher or Lower Card Game 6:00 Paint Night	11:00 Physio Group Exercises (Oak) 1:45 Travel to the Bahamas 6:00 Guitar Sing-a-long 7:00 Christmas Take Down	10:30 Java Memory 10:45 Creative Play 2:15 Music with Tara Dunphy 6:00 Axe Throw	11:00 Physio Group Exercises (Maple) 2:15 Sort It Out 7:00 Celebration of Life Service	10:15 Jungle Jack Hannah 11:00 Bingo 2:15 Men's Club	10:30 Java Music 10:30 Hymn Sing 1:30 Physio Group Exercises (Maple) 2:15 Whole Home Bingo 6:00 Karaoke Sing-a-long
10:30 Chapel Service with Chris 10:45 Virtual Church Service 2:15 What's Cooking? 6:00 Balloon Baseball	<u>Martin Luther King Jr. Day</u> 10:15 Manicures 1:30 Physio Group Exercises (Oak) 2:15 Colour Your World 6:00 Guitar Sing-a-long	10:15 Sensory Visits 11:00 Physio Group Exercises (Oak) 2:15 Name That Bird 2:30 Bird Cams Around The World	10:15 Montessori 10:30 Java Memory 2:00 Karaoke With Mike 2:15 Craft-Bobbles and Beads 6:00 Musical Ball Toss	10:15 Catholic Mass 11:00 Physio Group Exercises (Maple) 11:00 BINGO 2:15 Woodstock Documentary 6:00 Indoor Bowling	<u>Fry-Day</u> 12:00 Noon Hour Trivia 2:15 Fry-Day Social 6:00 Karaoke Sing-a-long	10:30 Java Music 1:30 Physio Group Exercises (Maple) 2:15 Indoor Bowling
10:45 Virtual Church Service 2:15 What's Cooking?	10:15 Manicures 1:30 Physio Group Exercises (Oak) 2:15 Memory Lane 6:00 BINGO NIGHT	11:00 Physio Group Exercises (Oak) 12:00 Noon Hour Trivia 2:15 Whiteboard Word Games 6:00 Balloon Baseball	<u>Celebrating Elvis</u> 10:30 Java Memory 10:45 Memory Lane 2:15 Elvis Entertainment 6:00 Axe Throw	10:15 BINGO 10:30 Drum Circle 11:00 Physio Group Exercises (Maple) 2:15 Colour Your World	8:30 Breakfast Club 10:30 Travelogue To Switzerland 2:15 Knitting & Crocheting Club	10:15 What's Cooking? Soup 1:30 Physio Group Exercises (Maple) 2:15 Soups On! Tasting 6:00 Karaoke Sing-a-long
10:30 Chapel Service with Chris 10:45 Virtual Church Service 2:15 Java Music 6:00 Musical Ball Toss	10:15 Manicures 1:30 Physio Group Exercises (Oak) 2:15 OAK Birthday Party 6:00 Guitar Sing-a-long	9:45 Food Advisory & Residents' Council Meeting 10:15 Sensory Visits 11:00 Physio Group Exercises (Oak) 2:15 Memory Lane	<u>Visiting Library Delivery</u> 10:15 Montessori 10:30 Java Memory 2:15 Music with Gary McGill 6:00 Indoor Bowling	<i>All programs are subject to change</i>		<h2>OAK Suites</h2> <p><i>Activity Aides ~ Elisabeth & Katie</i> <i>sblprograms@southbridgecare.com</i></p>



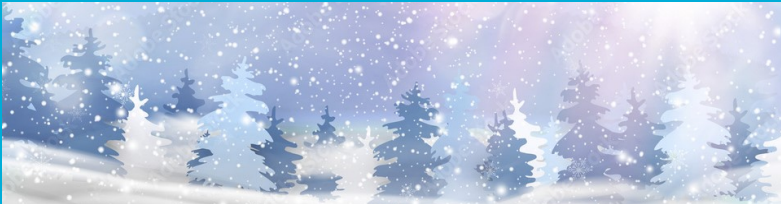
January 2024

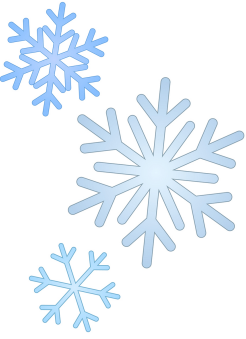


Sunday	Monday	Tuesday	Wednesday	Thursday	Friday	Saturday
	<u>New Year's Day</u> <u>Happy 2024!</u> 11:00 Rose Bowl Parade on TV 2:15 The Year 2023 in Review 1	10:15 Crafts 2:15 Whiteboard Word Games 2	10:15 BINGO 10:30 Java Memory 1:30 Physio Group Exercises (Pine) 2:15 Axe Throw 3	10:30 Poet Tree 10:30 Reading Nook 1:30 Physio Group Exercises (Pine) 2:15 Trivia 4	10:15 Sing-a-Long 11:00 Physio Group Exercises (Pine) 2:15 Manicures 5	10:30 Java Mentors 2:15 Music Request Hour: Say It & We Play It 6
10:45 Virtual Church Service 2:15 What's Cooking? 7	2:15 BINGO 6:00 Paint Night 8	10:15 Holiday Wrap Up 2:00 Movie Matinee 9	10:30 Java Memory 1:30 Physio Group Exercises (Pine) 2:15 Music with Tara Dunphy 10	1:30 Physio Group Exercises (Pine) 2:15 Memory Lane 7:00 Celebration of Life Service 11	10:15 Crafts 11:00 Physio Group Exercises (Pine) 2:15 Men's Club 2:15 Manicures 12	10:30 Java Music 2:15 Whole Home Bingo 13
10:30 Chapel Service with Chris 10:45 Virtual Church Service 2:15 What's Cooking? 14	<u>Martin Luther King Jr. Day</u> 10:15 Martin Luther King Jr. Independent Puzzles 2:15 Laugh with Lis 15	10:15 Crafts 2:15 BINGO 16	10:30 Java Memory 1:30 Physio Group Exercises (Pine) 17	10:15 Catholic Mass 1:30 Physio Group Exercises (Pine) 2:15 Trivia 18	<u>Fry-Day</u> 10:15 Sing-a-Long 11:00 Physio Group Exercises (Pine) 2:15 Fry-Day Social 19	10:30 Java Music 2:15 Indoor Bowling 20
10:45 Virtual Church Service 2:15 What's Cooking? 21	10:15 Travelogue: Newfoundland 2:15 Pine Birthday Party 22	10:15 Reading Nook 2:15 Whiteboard Word Games 23	<u>Celebrating Elvis</u> 10:15 BINGO 10:30 Java Memory 1:30 Physio Group Exercises (Pine) 2:15 Elvis Entertainment 24	10:30 Drum Circle 1:30 Physio Group Exercises (Pine) 2:15 Memory Lane 25	8:30 Breakfast Club 11:00 Physio Group Exercises (Pine) 2:15 Knitting & Crocheting Club 26	10:15 What's Cooking? Soup 2:15 Soups On! Tasting 27
10:30 Chapel Service with Chris 10:45 Virtual Church Service 2:15 Java Music 28	2:15 Memory Lane 29	9:45 Food Advisory & Residents' Council Meeting 2:15 Whiteboard Word Games 30	<u>Visiting Library Delivery</u> 10:15 BINGO 10:30 Java Memory 1:30 Physio Group Exercises (Pine) 2:15 Music with Gary McGill 31	<i>All programs are subject to change</i>		<h2>PINE Suites</h2> <p><i>Activity Aide ~ Hillary</i> <i>sblprograms@southbridgecare.com</i></p>



January 2024



Sunday	Monday	Tuesday	Wednesday	Thursday	Friday	Saturday
	<u>New Year's Day</u> <u>Happy 2024!</u> 10:15 BINGO 11:00 Rose Bowl Parade on TV 2:15 The Year 2023 in Review	10:30 Hope Group 1:30 Physio Group Exercises (Willow)	10:30 Java Memory 10:30 Whiteboard Word Games 11:00 Physio Group Exercises (Cherry) 2:15 Dart Toss	10:30 Poet Tree 10:30 Manicures 2:15 Coffee & Current Events	10:15 Colour Your World 1:30 Physio Group Exercises (Willow)	10:30 Java Mentors 11:00 Physio Group Exercises (Willow) 2:15 Music Request Hour: Say It & We Play It
10:45 Virtual Church Service 2:15 What's Cooking?	11:00 Physio Group Exercises (Cherry) 2:15 BINGO 3:00 Town Hall Meeting 6:00 Paint Night	10:15 Wrapping up the Holidays 1:30 Physio Group Exercises (Willow) 2:00 Movie Matinee	10:30 Java Memory 10:30 Whiteboard Word Games 11:00 Physio Group Exercises (Cherry) 2:15 Music with Tara Dunphy	10:30 Manicures 2:15 TV Trivia 7:00 Celebration of Life Service	1:30 Physio Group Exercises (Willow) 2:15 Men's Club 2:15 Memory Lane	10:30 Java Music 11:00 Physio Group Exercises (Willow) 2:15 Whole Home Bingo
10:30 Chapel Service with Chris 10:45 Virtual Church Service 2:15 What's Cooking?	<u>Martin Luther King Jr. Day</u> 10:15 Martin Luther King Jr. Facts 11:00 Physio Group Exercises (Cherry) 2:15 BINGO	1:30 Physio Group Exercises (Willow) 2:00 Inspire	10:30 Java Memory 11:00 Physio Group Exercises (Cherry) 2:15 Manicures	10:15 Catholic Mass 2:30 Dice Game: Left, Right, Centre	<u>Fry-Day</u> 10:15 Crafts 1:30 Physio Group Exercises (Willow) 2:15 Fry-Day Social	10:30 Java Music 11:00 Physio Group Exercises (Willow) 2:15 Indoor Bowling
10:45 Virtual Church Service 2:15 What's Cooking?	10:15 Walks 11:00 Physio Group Exercises (Cherry) 2:30 Willow Birthday Party	10:15 Crafts 1:30 Physio Group Exercises (Willow) 2:15 BINGO	<u>Celebrating Elvis</u> 10:30 Java Memory 10:30 Elvis Fun Facts & Songs 11:00 Physio Group Exercises (Cherry) 2:15 Elvis Entertainment	10:30 Drum Circle 10:30 Manicures 2:15 TV Trivia	8:30 Breakfast Club 1:30 Physio Group Exercises (Willow) 2:15 Knitting & Crocheting Club	10:15 What's Cooking? Soup 11:00 Physio Group Exercises (Willow) 2:15 Soups On! Tasting
10:30 Chapel Service with Chris 10:45 Virtual Church Service 2:15 Java Music	10:00 Wal-Mart Shopping & Lunch Outing 11:00 Physio Group Exercises (Cherry) 2:30 BINGO	9:45 Food Advisory & Residents' Council Meeting 1:30 Physio Group Exercises (Willow) 2:00 Hymn Sing and Bible Study	<u>Visiting Library Delivery</u> 10:30 Java Memory 10:30 Whiteboard Word Games 11:00 Physio Group Exercises (Cherry) 2:15 Music with Gary McGill	<i>All programs are subject to change</i>		<h2>WILLOW Suites</h2> <p><i>Activity Aide ~ Russlyn</i> <i>sblprograms@southbridgecare.com</i></p>